

# Warmington Traditional Brick Open Fire

## TF 800 Firebox and Hebel Enclosure

NOTE: Requires Hebel Enclosure

Fire, Flue System to Comply with ASNZS 2918:2001

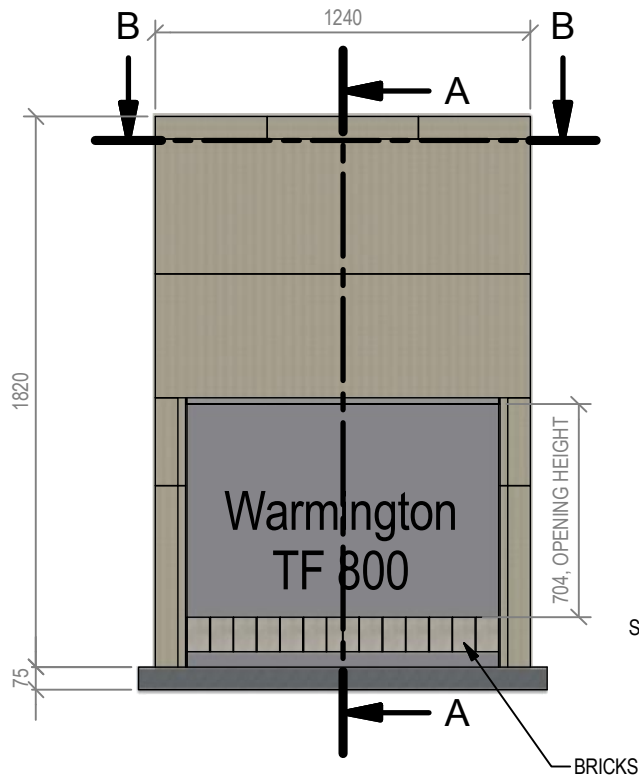
**Due to continued product improvement, Warmington Ind LTD reserves the right to change product specifications without prior notification.**

Read all the instructions carefully before commencing the Installation. Failure to follow these instructions may result in a fire hazard and void the warranty

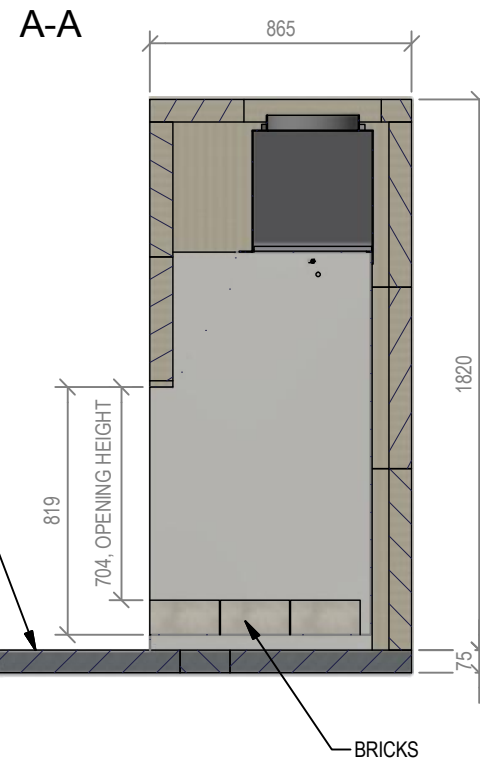
For Specification See: [www.warmington.co.nz](http://www.warmington.co.nz)

Copyright ©

\*Note: Combustibles include timber, adhesives, plastics, etc - refer to ASNZS 2918:2001

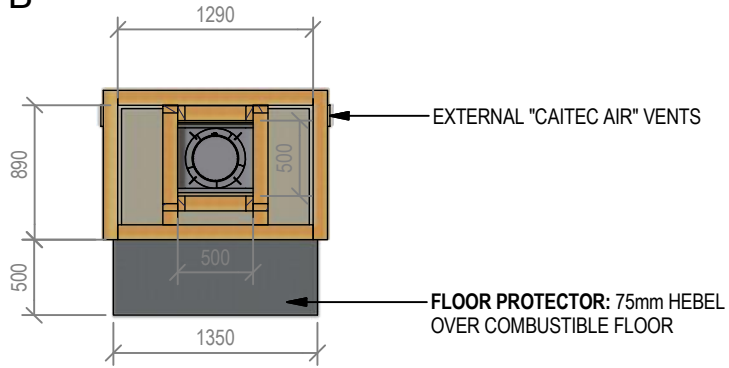


HEARTH:  
CAN BE AS HIGH AS FIRE HEARTH  
REBATED INTO FLOOR \*  
FLUSH WITH FLOOR \*  
STEPPED DOWN FROM FIRES HEARTH (BASE) \*



<b>Warmington Industries Ltd.</b>			
PH: 09 273 9227 FAX: 09 273 9241 WEB: <a href="http://www.warmington.co.nz">www.warmington.co.nz</a>			
TITLE	TF 800 FIREBOX AND HEBEL ENCLOSURE	DATE	01/06/17
DRAWN	EMLYN	REVISION	02
SCALE	NOT TO SCALE		

B-B



# Warmington Traditional Brick Open Fire

## TF 800 Timber Framing

NOTE: Requires Hebel Enclosure  
Fire, Flue System to Comply with AS/NZS 2918:2001

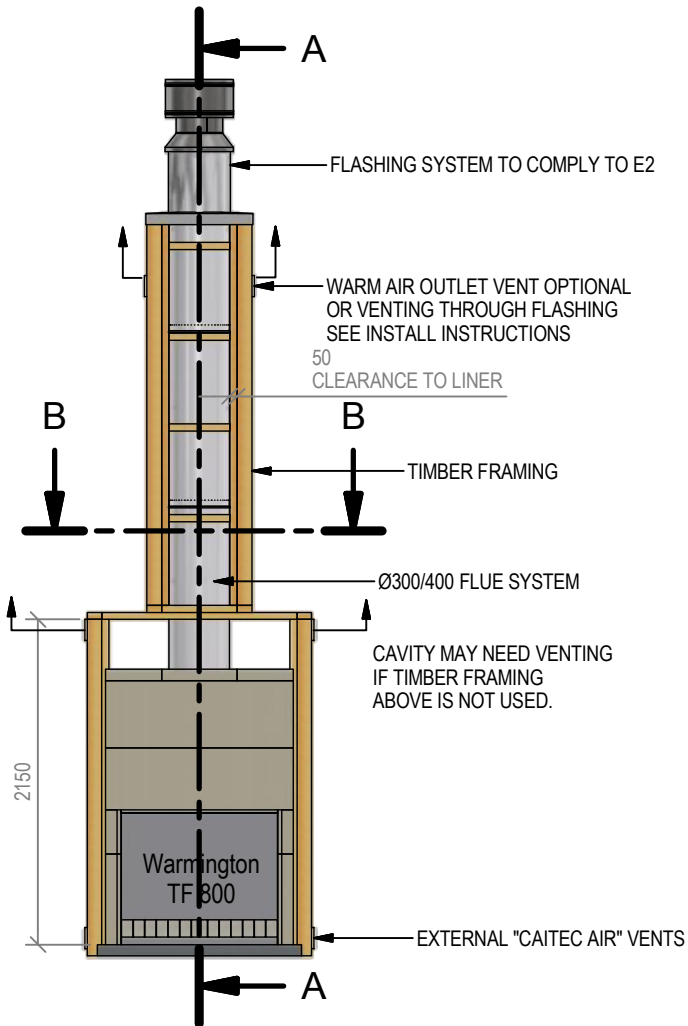
**Due to continued product improvement, Warmington Ind LTD reserves the right to change product specifications without prior notification.**

Read all the Instructions carefully before commencing the Installation. Failure to follow these instructions may result in a fire hazard and void the warranty

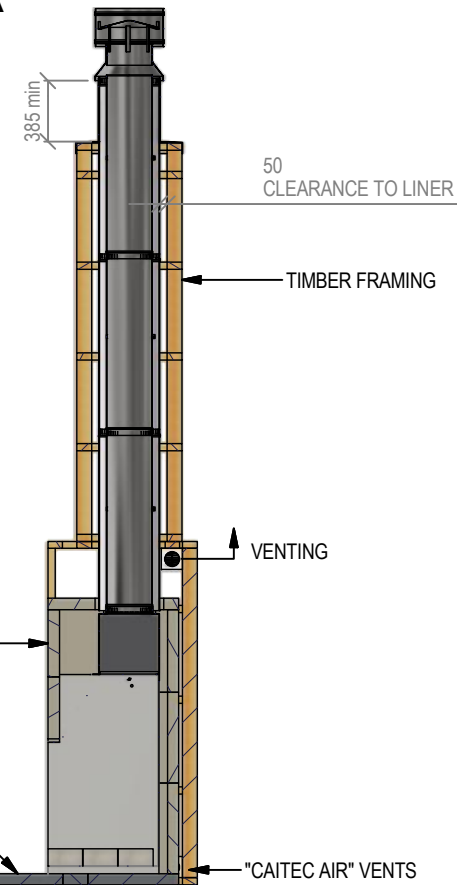
For Specification See: [www.warmington.co.nz](http://www.warmington.co.nz)

Copyright ©

\*Note: Combustibles include timber, adhesives, plastics, etc - refer to AS/NZS 2918:2001



A-A



**IMPORTANT NOTE:**

WHERE AN INTERNAL WALL BOARD FINISH IS REQUIRED AROUND THE FIREPLACE, ENSURE ALLOWANCE IS MADE TO PLACE NON COMBUSTIBLE INTERNAL WALL LINING (e.g. PROMINA ETERPAN, SUPALUX) TO COVER THE EXTENT OF THE HEBEL BLOCK SURROUND

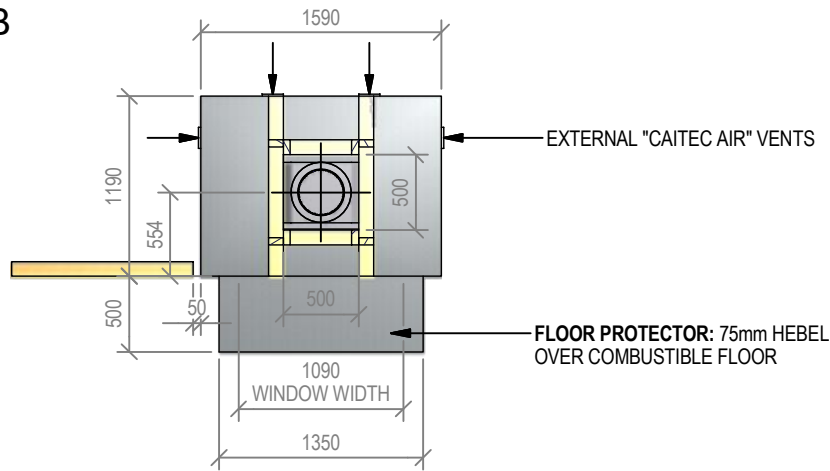
DIRECTLY TOUCHING THE FIREBOX WITH ANY BOARD OR PLASTER MAY CAUSE CRACKING FROM HEAT EXPANSION  
ALLOW 3mm MINIMUM SPACE AWAY FROM THE FIREBOX

**NOTE:**

WARMINGTON CAITEC AIR IS REQUIRED  
SEE SPECIFIC INSTALL INSTRUCTION

<b>Warmington Industries Ltd.</b>			
PH: 09 273 9227 FAX: 09 273 9241 WEB: <a href="http://www.warmington.co.nz">www.warmington.co.nz</a>			
TITLE	TF 800 TIMBER FRAMING	DATE	10/03/17
DRAWN	ROBERT	REVISION	02
SCALE	NOT TO SCALE		

B-B



# Warmington Traditional Brick Open Fire

## TF 800 Block Enclosure - No Hebel

Fire, Flue System to Comply with ASNZS 2918:2001

**Due to continued product improvement, Warmington Ind LTD reserves the right to change product specifications without prior notification.**

Read all the Instructions carefully before commencing the Installation. Failure to follow these instructions may result in a fire hazard and void the warranty

For Specification See: [www.warmington.co.nz](http://www.warmington.co.nz)

Copyright ©

\*Note: Combustibles include timber, adhesives, plastics, etc - refer to ASNZS 2918:2001

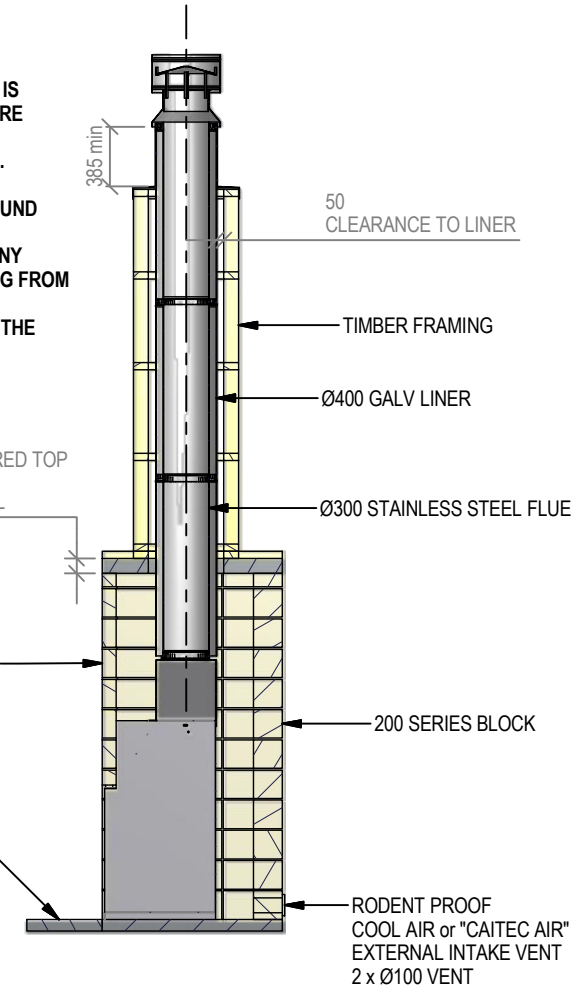
A-A

**IMPORTANT NOTE:**  
WHERE AN INTERNAL WALL BOARD FINISH IS REQUIRED AROUND THE FIREPLACE, ENSURE ALLOWANCE IS MADE TO PLACE NON COMBUSTIBLE INTERNAL WALL LINING (e.g. PROMINA ETERPAN, SUPALUX) TO COVER THE EXTENT OF THE HEBEL BLOCK SURROUND

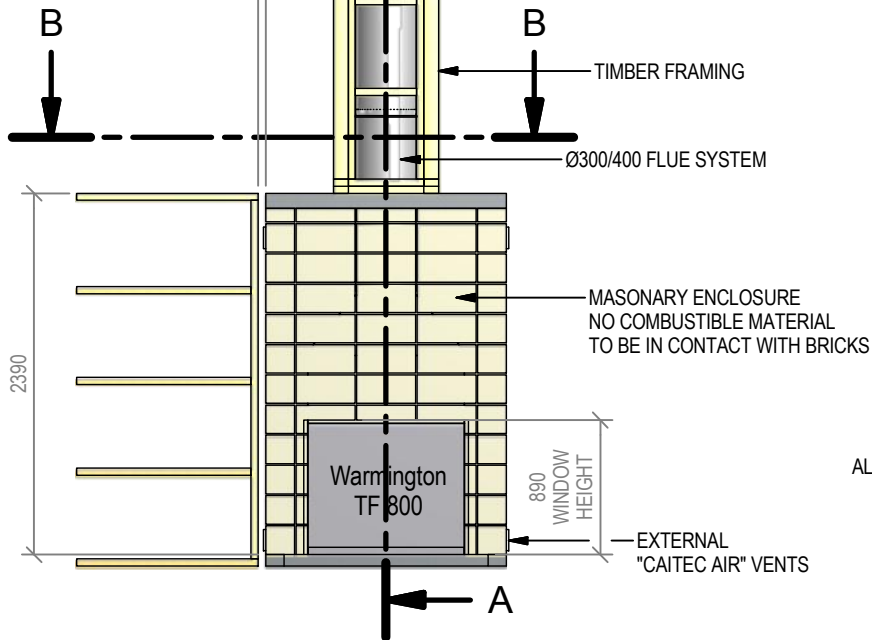
**DIRECTLY TOUCHING THE FIREBOX WITH ANY BOARD OR PLASTER MAY CAUSE CRACKING FROM HEAT EXPANSION**  
ALLOW 3mm MINIMUM SPACE AWAY FROM THE FIREBOX

ALLOW FINISHING ON FLOOR PROTECTOR

**NOTE:**  
WARMINGTON CAITEC AIR IS REQUIRED  
SEE SPECIFIC INSTALL INSTRUCTION

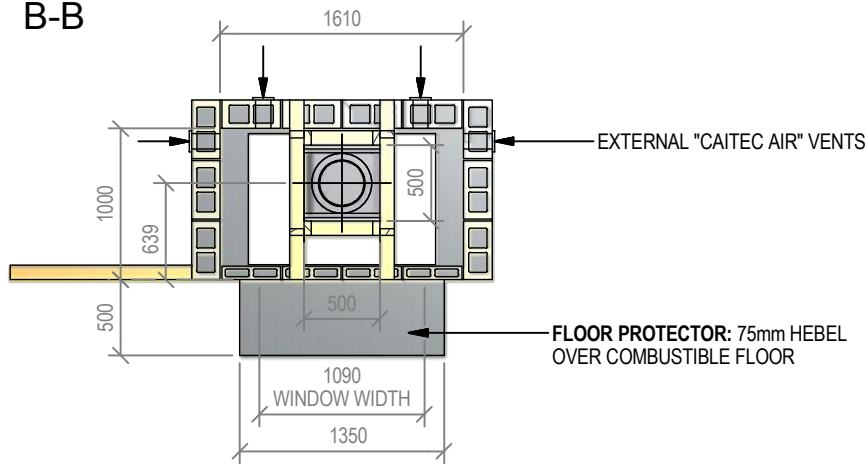


TIMBER FRAMING AND ANY \*COMBUSTIBLES TO BE SPACED 50mm AWAY FROM BLOCKWORK - ALL AROUND UNTIL 2400 HEIGHT



<b>Warmington Industries Ltd.</b>			
PH: 09 273 9227 FAX: 09 273 9241 WEB: <a href="http://www.warmington.co.nz">www.warmington.co.nz</a>			
TITLE	TF 800 BLOCK ENCLOSURE - NO HEBEL	DATE	05/05/11
DRAWN	ROBERT	SCALE	NOT TO SCALE
REVISION			01

B-B



# Warmington Traditional Brick Open Fire

## TF 800 Block Enclosure - With Hebel

NOTE: Requires Hebel Enclosure

Fire, Flue System to Comply with ASNZS 2918:2001

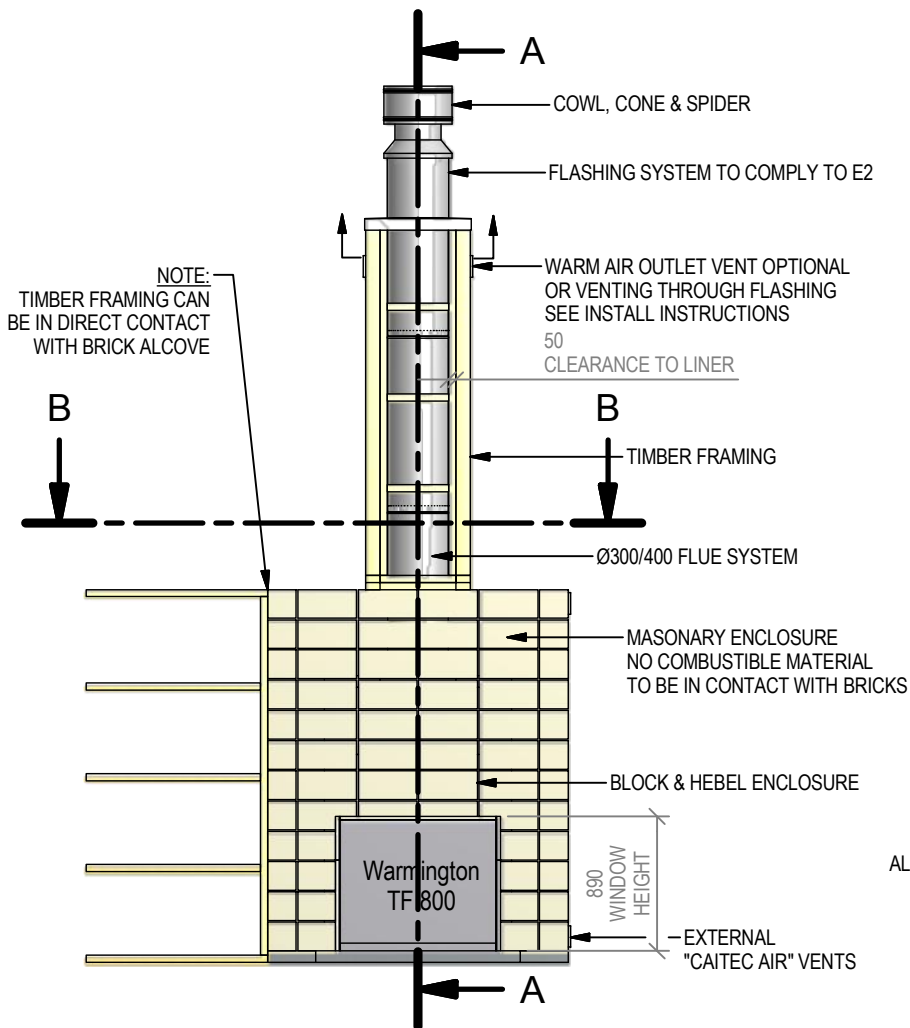
**Due to continued product improvement, Warmington Ind LTD reserves the right to change product specifications without prior notification.**

Read all the Instructions carefully before commencing the Installation. Failure to follow these instructions may result in a fire hazard and void the warranty

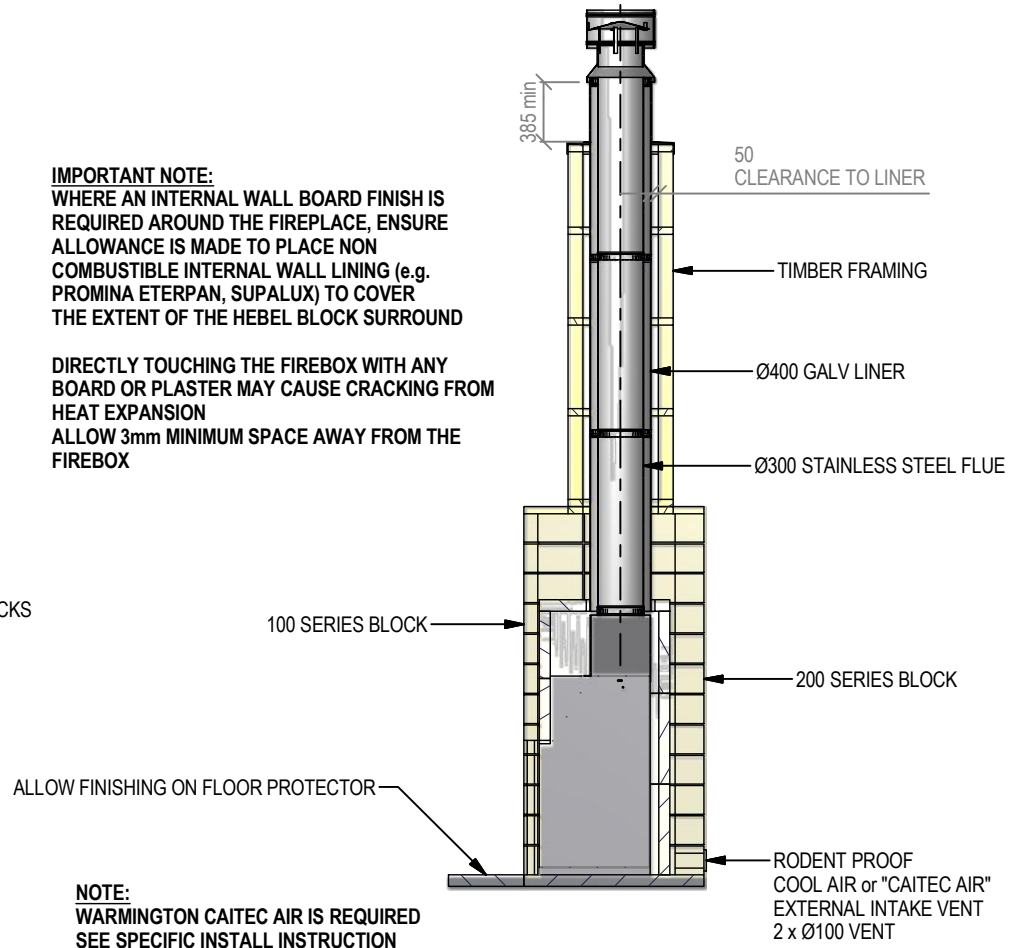
For Specification See: [www.warmington.co.nz](http://www.warmington.co.nz)

Copyright ©

\*Note: Combustibles include timber, adhesives, plastics, etc - refer to ASNZS 2918:2001



A-A



<b>Warmington Industries Ltd.</b>			
PH: 09 273 9227 FAX: 09 273 9241 WEB: <a href="http://www.warmington.co.nz">www.warmington.co.nz</a>			
TITLE	TF 800 BLOCK ENCLOSURE - WITH HEBEL	DATE	05/05/11
DRAWN	ROBERT	SCALE	NOT TO SCALE
REVISION			01