

# Warmington Flueless Outdoor Gas Open Fire

## SG 1250 Outdoor Flueless Firebox

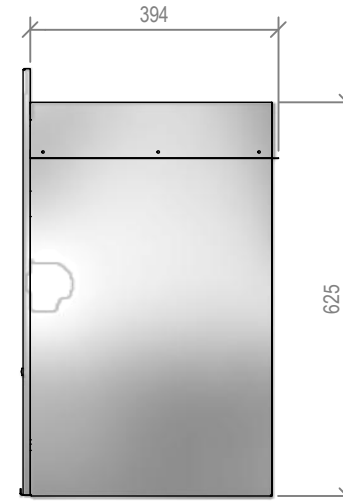
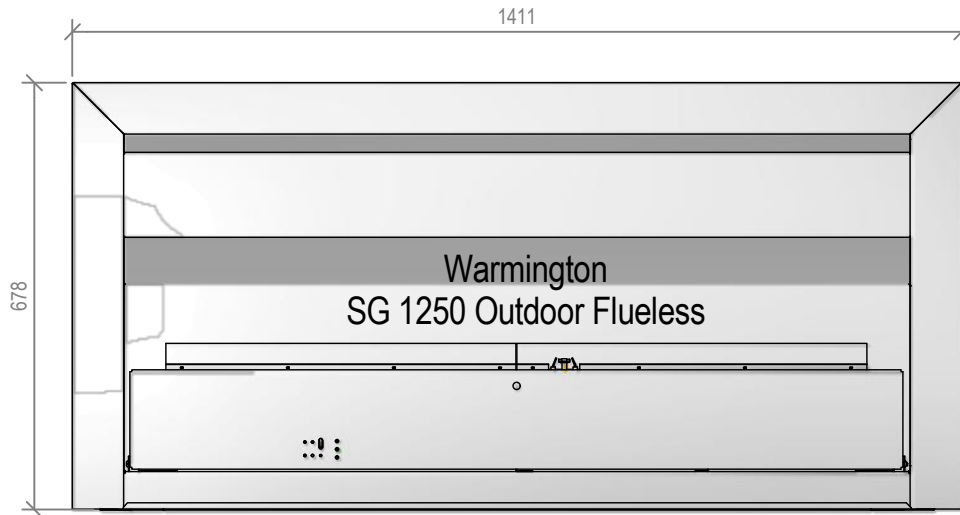
Fire, Flue System to Comply with NZS 5261 / 5262 : 2003

**Due to continued product improvement, Warmington Ind LTD reserves the right to change product specifications without prior notification.**

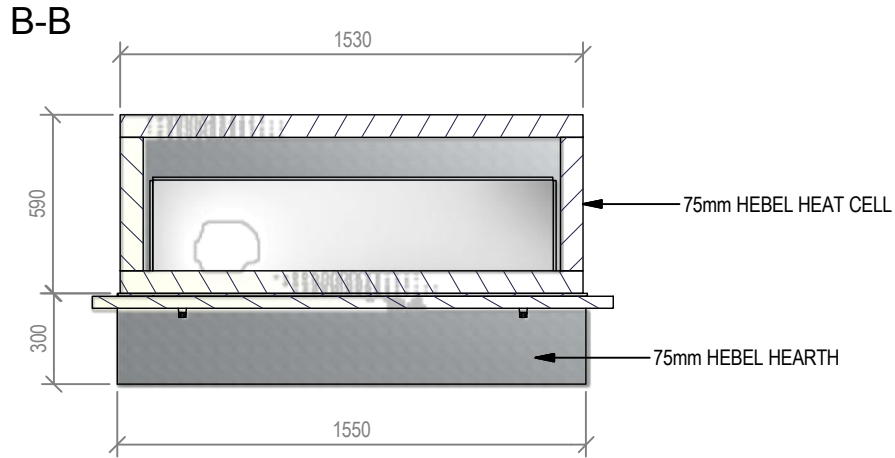
Read all the Instructions carefully before commencing the Installation. Failure to follow these instructions may result in a fire hazard and void the warranty

For Specification See: [www.warmington.co.nz](http://www.warmington.co.nz)

Copyright ©



<b>Warmington Industries Ltd.</b>			
PH: 09 273 9227 FAX: 09 273 9241 WEB: <a href="http://www.warmington.co.nz">www.warmington.co.nz</a>			
TITLE	SG 1250 OUTDOOR FLUELESS FIREBOX		
DRAWN	ROBERT	DATE	26/05/11
SCALE	NOT TO SCALE	REVISION	01



## Warmington Flueless Outdoor Gas Open Fire

SG 1250 Outdoor Flueless Hebel Enclosure

Fire, Flue System to Comply with NZS 5261 / 5262 : 2003

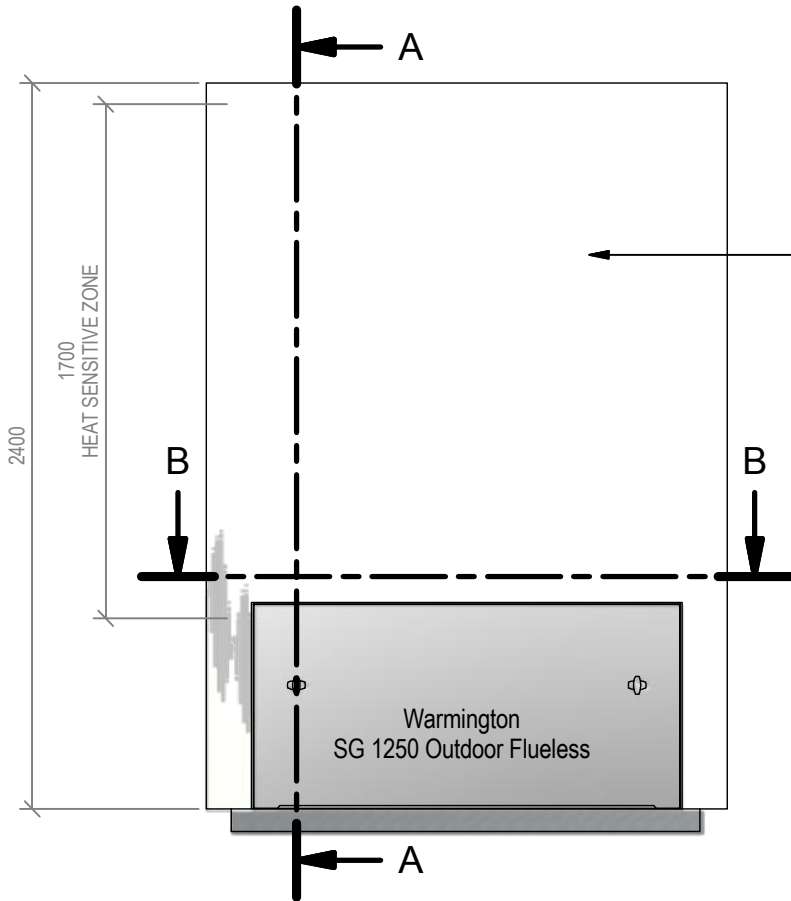
**Due to continued product improvement, Warmington Ind LTD reserves the right to change product specifications without prior notification.**

Read all the Instructions carefully before commencing the Installation. Failure to follow these

instructions may result in a fire hazard and void the warranty

For Specification See: [www.warmington.co.nz](http://www.warmington.co.nz)

Copyright ©



NO COMBUSTABLE MATERIAL  
TO BE USED IN OR ON THIS AREA

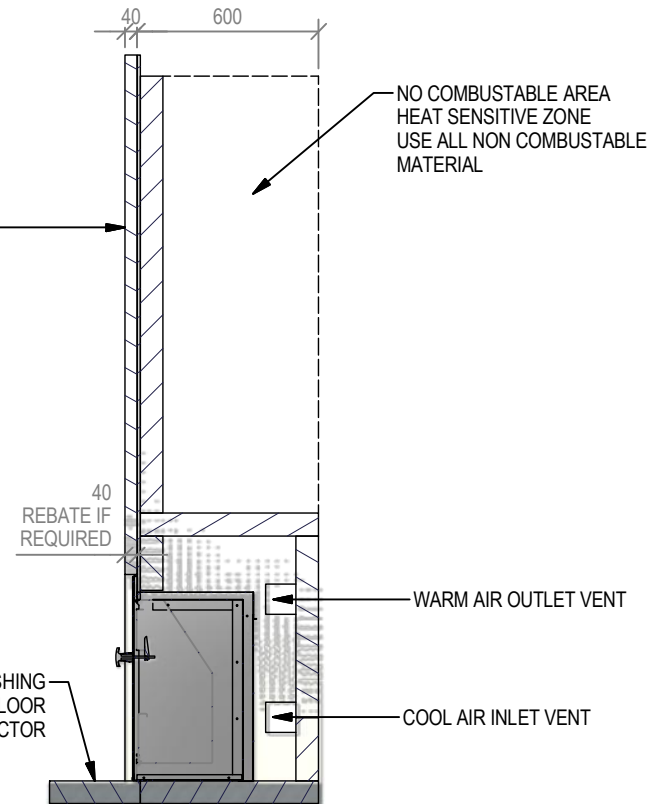
**NOTE:**  
GAS TEMPERATURE WILL  
EXCEED 150°C RUNNING  
UP THE FRONT FACE

**REBATE TO REDUCE  
WATER ENTERING THE FIRE**

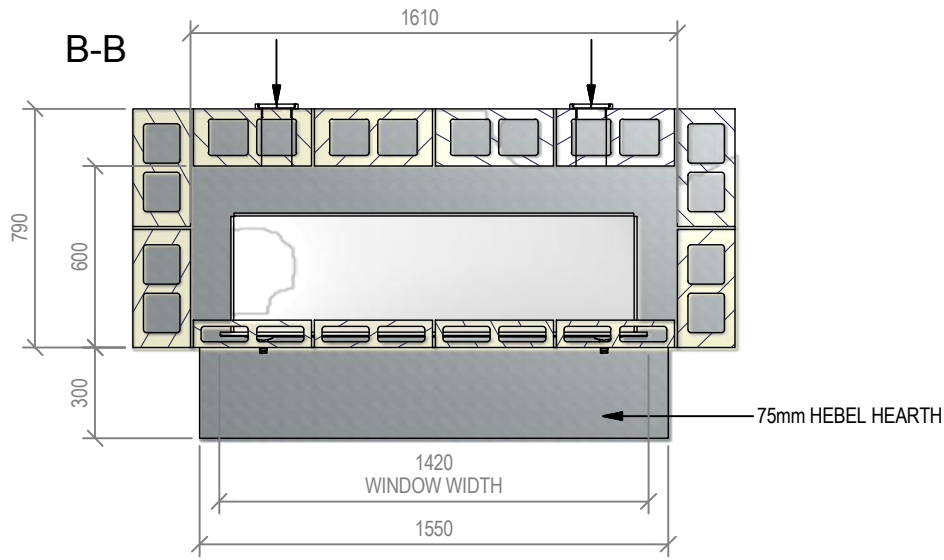
**THESE FIRES ARE FOR  
OUTSIDE USE ONLY  
NOT TO BE INSTALLED  
INDOORS**

**ENSURE VENTING IS  
NOT RESTRICTED OR  
THE AIR FLOW IMPINGES  
ON ANY COMBUSTIBLE  
MATERIAL**

**A-A**



<b>Warmington Industries Ltd.</b>			
PH: 09 273 9227 FAX: 09 273 9241 WEB: <a href="http://www.warmington.co.nz">www.warmington.co.nz</a>			
TITLE	SG 1250 OUTDOOR FLUELESS HEBEL ENCLOSURE	DATE	26/05/11
DRAWN	ROBERT	REVISION	01
SCALE	NOT TO SCALE		



## Warmington Flueless Outdoor Gas Open Fire

SG 1250 Outdoor Flueless Block Enclosure

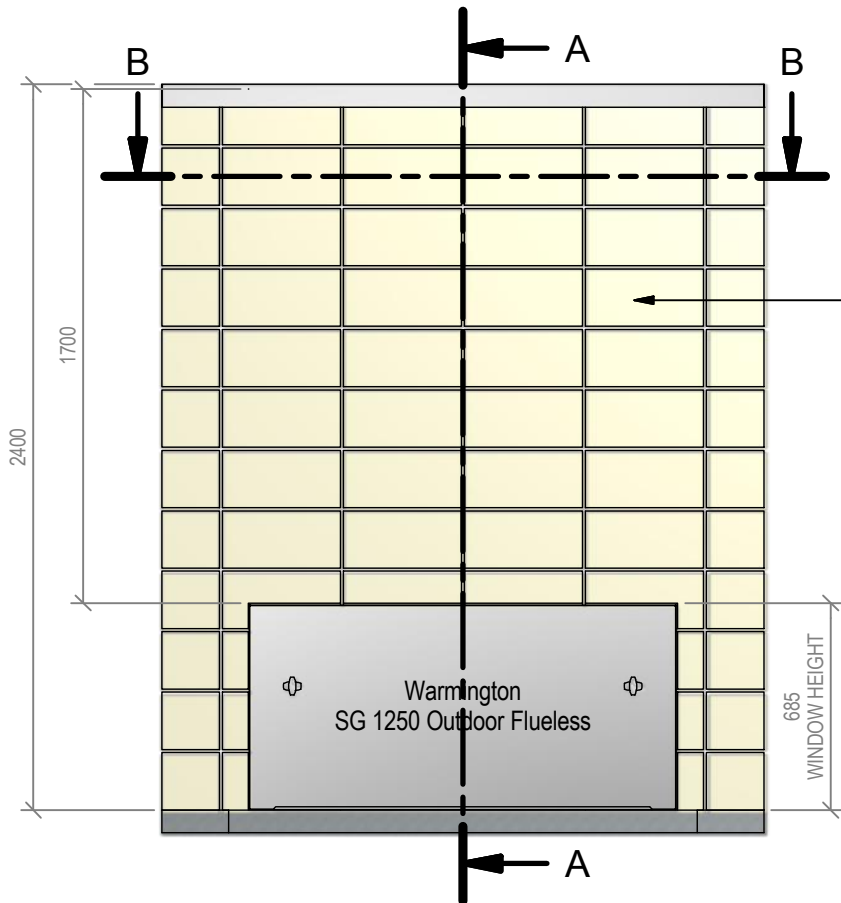
Fire, Flue System to Comply with NZS 5261 / 5262 : 2003

**Due to continued product improvement, Warmington Ind LTD reserves the right to change product specifications without prior notification.**

Read all the Instructions carefully before commencing the Installation. Failure to follow these instructions may result in a fire hazard and void the warranty.

For Specification See: [www.warmington.co.nz](http://www.warmington.co.nz)

Copyright ©



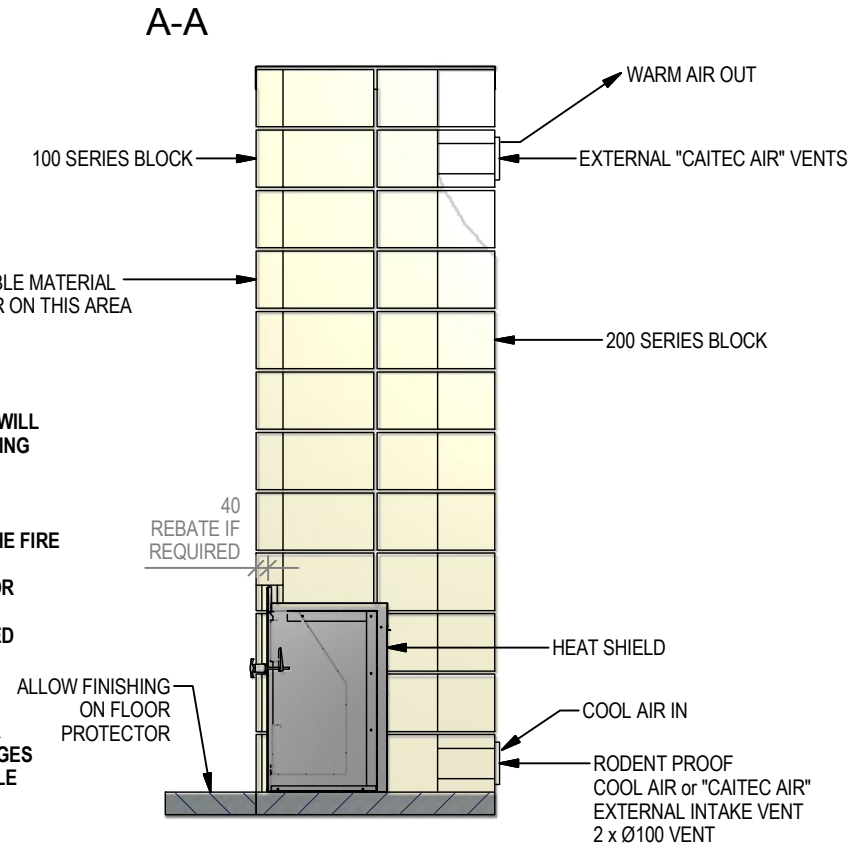
**NOTE:**  
GAS TEMPERATURE WILL EXCEED 150°C RUNNING UP THE FRONT FACE

REBATE TO REDUCE WATER ENTERING THE FIRE

THESE FIRES ARE FOR OUTSIDE USE ONLY NOT TO BE INSTALLED INDOORS

ENSURE VENTING IS NOT RESTRICTED OR THE AIR FLOW IMPINGES ON ANY COMBUSTIBLE MATERIAL

NO COMBUSTABLE MATERIAL TO BE USED IN OR ON THIS AREA



<b>Warmington Industries Ltd.</b>			
PH: 09 273 9227 FAX: 09 273 9241 WEB: <a href="http://www.warmington.co.nz">www.warmington.co.nz</a>			
TITLE	SG 1250 OUTDOOR FLUELESS BLOCK ENCLOSURE	DATE	24/05/11
DRAWN	ROBERT	SCALE	NOT TO SCALE
SCALE	NOT TO SCALE	REVISION	01