

# *Warmington Rotisserie for Outdoor Fires*

## **Assembly Instructions**



Please keep these instructions in a safe place  
for future reference.

# COMPONENTS LIST



Rotisserie Motor



Rotisserie rod with extensions



Rotisserie 4 prong skewers



Rotisserie rod handle



Davit



Rotisserie motor bracket



Rotisserie motor body arm



Screws for fastening



Rotisserie rod holder

## ASSEMBLY INSTRUCTIONS

- Step 1: Assemble the two rotisserie rods by screwing together.



- Step 2: Place the rotisserie 4 prong skewer onto the rod and do up the thumb screws.



- Step 3: Screw the handle onto the rod.

**CAUTION:** Do not use the handle in the firebox. This is for use when removing the rotisserie from the fire.



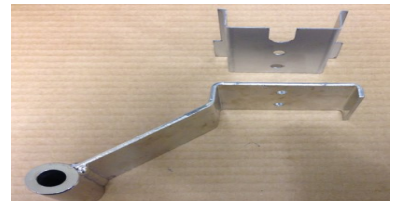
Left hand motor arm

Right hand motor arm

- Step 4: **Motor Body Assembly:**

Assemble the motor body arm and rotisserie bracket as shown. Take note of the orientation of the motor body arm to the rotisserie bracket.

Insert the screws supplied and tighten with the use of a screw driver and crescent.





Step 5: Remove the davit rod and linch pin from you firebox.



Step 6: Place the motor body arm on the davit rod with the cut out for the rotisserie rod to the top.



Step 7: Re-insert the linch pin at the desired height.



Step 8: Place the spike end of the rotisserie rod into the rotisserie rod holder. The Rotisserie rod holder is placed inside the fire box during normal operation.



Step 9: Place the Rotisserie motor onto the bracket. Place the handle end of the rotisserie rod into the rotisserie motor and turn it on.

**CAUTION:** Ensure the handle is removed and used for carrying purposes only as it is plastic.

